



Where students and businesses thrive together.

Why NEXT Career Pathways?

NEXT Career Pathways can help you connect a career with your passions, abilities, and skills. NEXT Career Pathways can really help you find something you are passionate about!

- You could be ready for work as soon as you are ready to enter the workforce!
- NEXT Career Pathways balances instruction with DOING—in a real-work setting!
- NEXT Career Pathways will help you develop a deeper relationship with teachers that are in the area they love and the businesses that are doing what you are passionate about.

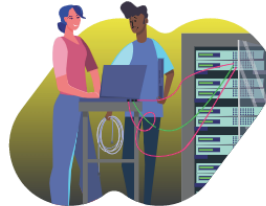
THE EIGHT PATHWAYS



NEXT | AUTOMOTIVE/
TRANSPORTATION
CAREER PATHWAY



NEXT | BUSINESS
CAREER PATHWAY



NEXT | COMPUTER
SCIENCE
CAREER PATHWAY



NEXT | CONSTRUCTION
CAREER PATHWAY



NEXT | EDUCATION
CAREER PATHWAY



NEXT | HEALTHCARE
CAREER PATHWAY



NEXT | MANUFACTURING
CAREER PATHWAY



NEXT | NATURAL RESOURCES
AND AGRICULTURE
CAREER PATHWAY

Career Connected Activities | Tours | Job Shadow | Internships

Contact us



hello@nextpathways.org



nextpathways.org



@iascnex

Scott Patrow - Director spatrow@isd6070.org 218.256.5576



Automotive/Transportation

Great for students who are forward-thinking and creative, want to embrace a service-minded approach, enjoy problem solving, and a passion for innovation.



Business

Great for students who are creative, entrepreneurial-minded, like working with people and in teams, have lots of ideas and passion, and are interested in design and development of products.



Computer Science

Great for students who are creative and enjoy seeing ideas come to life, have a passion for computers and technology, are problem solvers and seek out challenges.



Construction

Great for students who are hands-on, visual learners, are active and work hard, and who enjoy building and making.



Education

Great for students who enjoy working with kids, serving others, are enthusiastic and passionate about learning, and are creative!



Healthcare

Great for students who are compassionate, team players, problem solvers, enjoy learning, are flexible, and detail oriented.



Manufacturing

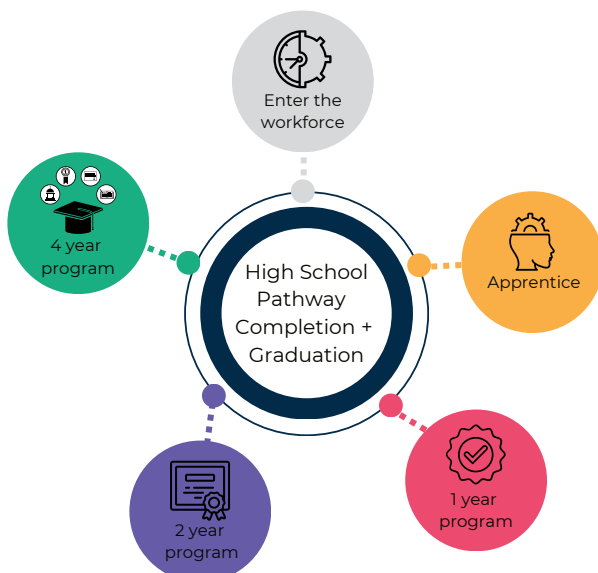
Great for students who have the "dream it, do it" mentality and are ready to transform raw materials into high-quality finished products.



Natural Resources/ Agriculture

Great for students who enjoy learning about plants, animals, and food!

NEXT Career Pathways is here to prepare you for the future YOU want!



EXPLORE

We inspire hope and curiosity

EXPERIENCE

We provide relevant experiences and intentional opportunities for students to imagine a future version of themselves in high demand careers

EXCEL

We unleash endless possibilities

EVOLVE

By going together, WE can go further

Contact us



hello@nextpathways.org



nextpathways.org



@iascnxt

Scott Patrow - Director spatrow@isd6070.org 218.256.5576



Step 1 EXPLORE your options	Step 2 EXPERIENCE hands on learning opportunities	Step 3 EXCEL with real life application
Get things kickstarted!	Really dive into the pathway!	Cap off your learning journey!
	<ul style="list-style-type: none"> • Small Engines • Outdoor Power Sports 	<p>choose 1</p> <ul style="list-style-type: none"> • Work Experience • Individual Project as approved by instructor and administration • Supermileage Club

What will your **Next** step be?



Heavy Truck Driver
Automotive Sales



Service Technician
Transportation Manager



Transportation Planner
Design Engineer

Nearly **EVERY**
COMMUNITY

in
Northern Minnesota

REQUIRES



workers in
this field

**OUTDOOR POWER
EQUIPMENT
TECHNICIAN**

OVER

400

open positions in
the next year

The **AVERAGE WAGE**

of an

AUTO TECHNICIAN

is

\$24.39

per hour

Contact us



hello@nextpathways.org



nextpathways.org



@iascnxt



<p>Step 1 EXPLORE your options</p>	<p>Step 2 EXPERIENCE hands on learning opportunities</p>	<p>Step 3 EXCEL with real life application</p>
<p>Get things kickstarted!</p>	<p>Really dive into the pathway!</p>	<p>Cap off your learning journey!</p>
<ul style="list-style-type: none"> • Business Career Exploration 	<p>choose 2</p> <ul style="list-style-type: none"> • Marketing and Promotions • Law: Personal and Business • Accounting • Business for the Non-Business Major 	<p>choose 1</p> <ul style="list-style-type: none"> • Business Internship • Raider Retail-School Store • Work Experience • Individual Project as approved by instructor and administration

What will your **Next** step be?



Customer Service Rep.
Salesperson



Marketing Coordinator
Administrative Assistant



Accountant
Human Resources Manager

The average salary of a

OPERATIONS MANAGER

IN NORTHEAST MINNESOTA

is

\$43.50

per hour

There will be a need for

21,000

NEW EMPLOYEES

to meet demands

by

2030



In Northeast Minnesota

25%

of

HIGHLY DEMANDED CAREERS

are

RELATED TO BUSINESS

Contact us



hello@nextpathways.org



nextpathways.org



@iascnex



Step 1 EXPLORE your options	Step 2 EXPERIENCE hands on learning opportunities	Step 3 EXCEL with real life application
Get things kickstarted!	Really dive into the pathway!	Cap off your learning journey!
<p>choose 1</p> <ul style="list-style-type: none"> • Construction Tech I • Woods 1 	<ul style="list-style-type: none"> • Core Trades/Hand & Power Tools • Welding I • DIY Home Improvement • Construction Tech II -or- Woods II 	<p>choose 1</p> <ul style="list-style-type: none"> • MN North College Construction Project • Work Experience • Individual Project as approved by instructor and administration
COMPLEMENTARY COURSE: Welding II		

What will your **NEXT** step be?



Landscaping
Brick Mason



Electrician, Plumber
Carpenter



Architect
Surveyor

NORTHEAST MN

employs over

10,000

PEOPLE
in the
TRADES

and are projected to grow

9%

MORE
IN THE
next 10 years

CONSTRUCTION & BUILDING INSPECTORS

average wage is

\$39.00

per hour

Complete your NCCER certification



in the **CONSTRUCTION**

Pathway at your high school
+ be ready for success at

MESABI RANGE COLLEGE

or in an apprenticeship program after high school!

Contact us



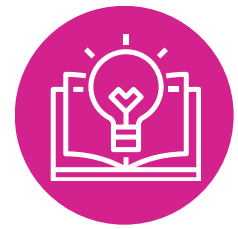
hello@nextpathways.org



nextpathways.org



@iascnxt



Step 1 EXPLORE your options	Step 2 EXPERIENCE hands on learning opportunities	Step 3 EXCEL with real life application
Get things kickstarted!	Really dive into the pathway!	Cap off your learning journey!
<ul style="list-style-type: none"> CIS Intro to Teaching (IASC online) 	<p style="text-align: center;">choose 1</p> <p>K-12 Series</p> <ul style="list-style-type: none"> CIS Class Act Seminar 1 (IASC) <p>Early Childhood Series</p> <ul style="list-style-type: none"> Child Development and Learning (IASC Online) <p>Note: You may wish to take both Class Act Seminar 1 and Child Development and Learning if your schedule allows</p>	<ul style="list-style-type: none"> Classroom Experience (Incorporated in Intro to Teaching and Class Act Seminar 1)
<p>COMPLEMENTARY COURSES: Higher Level English, Math, Science and Electives</p>		

What will your
NEXT
step be?



Daycare Worker
Coach



Education Support Paraprofessional
K-12 Teacher

TRANSFER SEAMLESSLY

into Minnesota North College's Class Act Program

to finish your

TWO-YEAR DEGREE

program in education with the option

to complete your four-year degree in elementary education at MNNC through St. Scholastica

In the education career pathway explore additional

EDUCATION CAREERS

like



Early Childhood Teacher, Social Work, Coach, or School Counselor, too

Between 2020-2030 the MN K-12 Education System

will need

40,000

NEW TEACHERS

18,800
in elementary

6,800
in middle school

14,400
in high school

Contact Us



hello@nextpathways.org



nextpathways.org



@iascnnext



Step 1 EXPLORE your options	Step 2 EXPERIENCE hands on learning opportunities	Step 3 EXCEL with real life application
Get things kickstarted!	Really dive into the pathway!	Cap off your learning journey!
<ul style="list-style-type: none"> Healthcare Careers Exploration Biology 10 Health 	<ul style="list-style-type: none"> CIS Medical Terminology Human Anatomy A or B CIS Comp 1 Conceptual Chemistry or CIS Chem 	<p style="text-align: center;">choose 1</p> <ul style="list-style-type: none"> 11-12 CIS Introduction to Health Care Core Concepts 11-12 Nursing Assistant Registered 11-12 Community Internships: Healthcare Individual Project as approved by instructor and administration
<p>COMPLEMENTARY COURSES: 10-12 Mental Health, 11-12 College Prep Bio, 11-12 Speech & Debate, Sociology, Psychology, Forensic Science</p>		

What will your
Next step be?



EMT/Paramedic
Medical Lab Tech.



Medical Lab Tech.
Registered Nurse



There will be **OVER**

43,000

openings for

REGISTERED NURSES



in Minnesota
in the next
10 years

LPN & RN COMBINED

there are about

78,000

workers in
Minnesota

The **AVERAGE WAGE**

of a

REGISTERED NURSE

is

\$37.92

per hour

Contact us



hello@nextpathways.org



nextpathways.org



@iascnex



Step 1 EXPLORE your options	Step 2 EXPERIENCE hands on learning opportunities	Step 3 EXCEL with real life application
Get things kickstarted!	Really dive into the pathway!	Cap off your learning journey!
<ul style="list-style-type: none"> Welding I 	<ul style="list-style-type: none"> Welding II 	<p>choose 1</p> <ul style="list-style-type: none"> Manufacturing Careers Internship Robotics Fabrication & Design @ GR Work Experience Individual project as approved by instructor and administration

What will your
Next step be?



Machine Operator
Welder



Sheet Metal Worker
Mechanical Engineering Tech.

The average
MANUFACTURING

position salary in

MINNESOTA

is
\$51.00

per hour

ALTHOUGH

ELECTRICAL ENGINEERING

is a small career field
there will be a need of

about
3000

PEOPLE BY 2030

Earn your **OSHA 10**

and

gain **PAID EXPERIENCE**

as a

MANUFACTURING

**CAREER PATHWAY
INTERN**

with IASC Next

Contact us



hello@nextpathways.org



nextpathways.org



@iascnxt



Step 1 EXPLORE your options	Step 2 EXPERIENCE hands on learning opportunities	Step 3 EXCEL with real life application
Get things kickstarted!	Really dive into the pathway!	Cap off your learning journey!
<p>choose 1</p> <ul style="list-style-type: none"> • Intro to Agricultural Science • Introduction to Natural Resources and Ecology 	<p>choose 2</p> <ul style="list-style-type: none"> • Intro to Plant Science • MN Foods • Intro to Animal Science • MN Wildlife 	<p>choose 1</p> <ul style="list-style-type: none"> • Woodland Stewardship at Grand Rapids (limit 1 Greenway student per year) • Work Experience • Individual Project as approved by instructor and administration

What will your NEXT step be?



Tree Trimmer
Wildland Firefighter



Environmental Tech
Nat. Resources Law Enforcement



Land Surveyor
Forester



The average
FORESTER

in Minnesota
makes about

\$32.00

per hour

CONTINUE YOUR
pathway education

LOCALLY

at
**MINNESOTA NORTH
COLLEGE ITASCA OR
VERMILION CAMPUSES**

in programs such as
Natural Resources, Water Management,
Fisheries, Conservation Officer,
Wildland Firefighting, or Land Surveying

**INDUSTRIAL MACHINERY
MECHANICS**

will have a need of almost

9,000

PEOPLE BY 2030

Contact us



hello@nextpathways.org



nextpathways.org



@iascnex